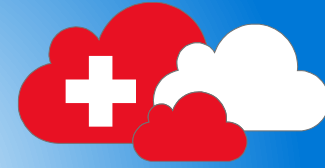


We will start very soon – stay tuned 😊

Partner Q&A Call – Aug 27  
Primo Amrein – Cloud Lead



# CH DC Updates under NDA

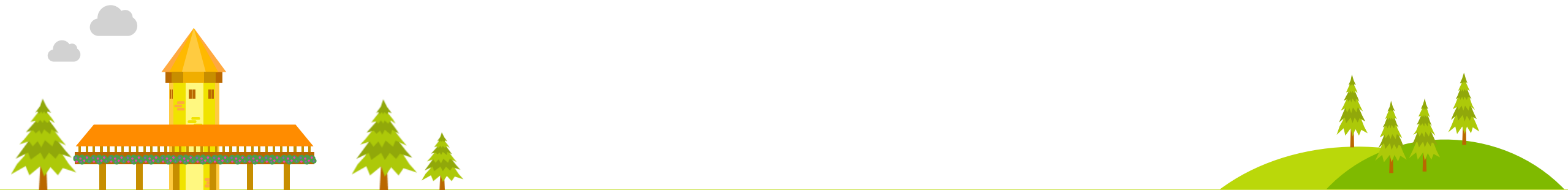
## Call is recorded and shared on Partner Community

Partner Q&A Call – Aug 27  
Primo Amrein – Cloud Lead

# Additional Azure Workloads Launched in CH



- PostgreSQL Flexible Server launched in Switzerland North (as public preview like everywhere globally)
- Sentinel full data residency, despite being marked “non-regional” in availability page, see also updated Sentinel [documentation](#)
- App Service Premium v3 now available in Switzerland North (enables Web App for Windows Containers)
- Azure Key Vault Managed HSM now GA in Switzerland North (was available as preview before)
- Azure API for FHIR now GA in Switzerland North (was available as private preview before)



# Azure Services Roadmap



The official Azure Roadmap

is published under [this link](#)



→ Heads-up under NDA: Azure NetApp Files and Mv2 VMs (up to 11.4 TB memory) planned to launch in next 1-3 months

TABLE KEY: Generally Available In Preview In Preview (hover to view expected timeframe) Future availability (hover to view expected timeframe)

SWITZERLAND			
Products	Non-regional	Switzerland North	Switzerland West

(mouse-over "Future availability" icons for target GA date; subject to change)



# Additional D365 & PP Applications in Swiss DCs

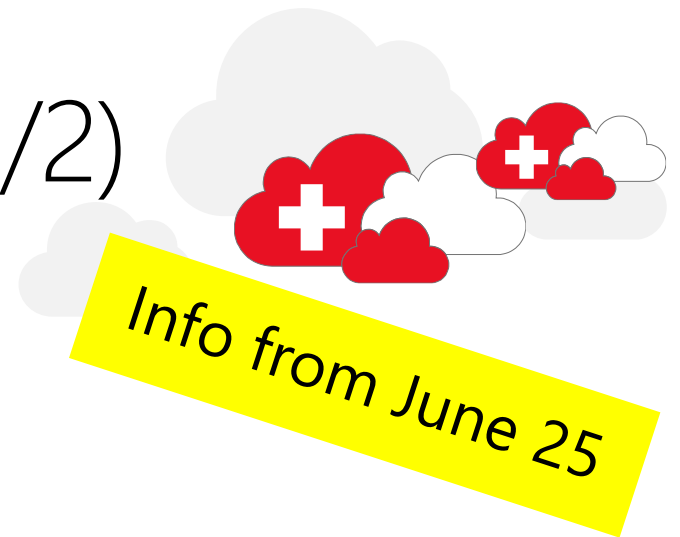


- Launched in first half of July:
  - Power Platform: AI Builder / details can be found [here](#)
  - Business Central – note: all existing Swiss clients are moved from EU DCs to Swiss DCs automatically

See [LinkedIn Post](#)

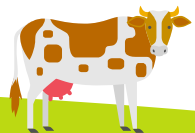


# Special Call-Outs on D365 F&SCM/O (1/2)

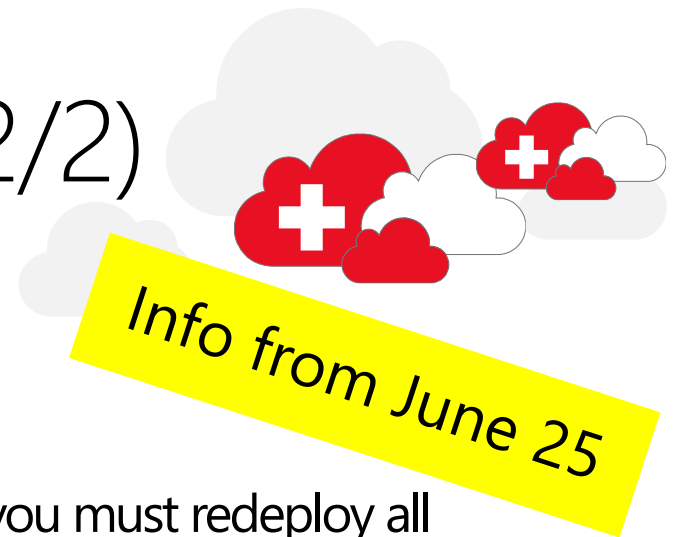


- Default Region:

- Typically, Lifecycle Services LCS used to set-up and configure F&SCM
- Even with the local link <https://ch.lcs.dynamics.com>, F&SCM usually targets deployment in a default region such as EU DCs – this is the standard operating model WW and not just the case for Switzerland
- If a client or partner doesn't want the default region and prefers a local DC: approach this through support (or FastTrack might take it up on their behalf with support)



# Special Call-Outs on D365 F&SCM/O (2/2)



- F&SCM Region Moves

- Not possible to seamlessly move to another DC: "To change the data center, you must redeploy all environments."
- Watch out for third party tools or connectors or plug-ins or customizations – can these be moved as well? If not, potential impact on performance?

[Move environments between data centers - Finance & Operations | Dynamics 365 | Microsoft Docs](#)

